

SSD CoreEraser Technology

User Manual

Aug 22th, 2012

Version 1.2

Overview

Since SSD (Solid State Drive) has become the main storage media for critical information, one of the most discussed issues regarding SSDs is the safety of data. To prevent unauthorized others from tampering or retrieving the data. Apacer has developed data protection utility tools called CoreEraser, CoreDestroyer and CoreProtector. This user manual is going to guide you through the interface and steps of this useful application tool.

This user manual assumes the CoreEraser utility running well and compatibly with your system.

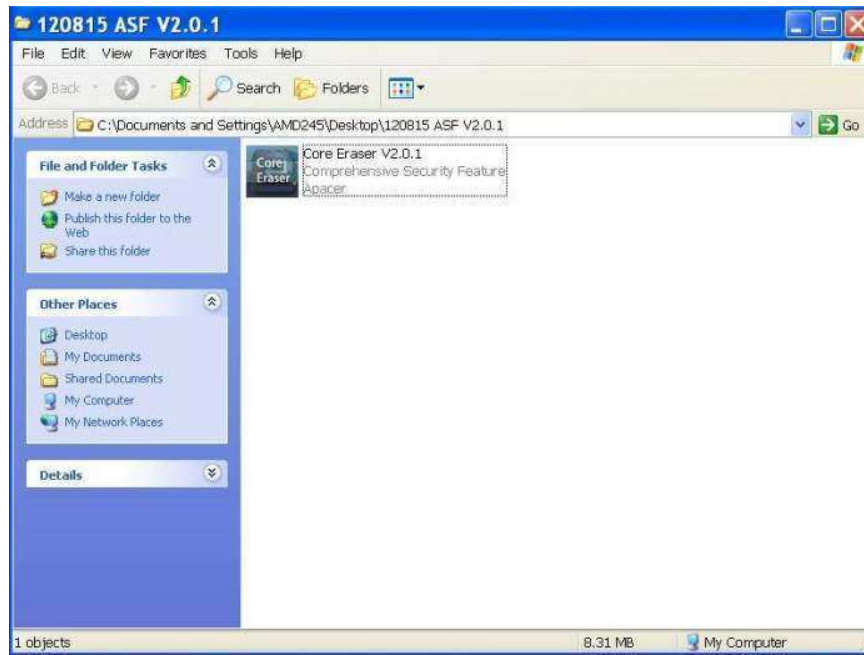
Attention

1. This tool does not support the SCSI platform.
2. It requires administrator authority to run this tool under the Windows 7.
3. When the host connects with more than one device, some features can only be applied to one device at a time.
4. If LED light keeps flashing, it means the command is still running. The LED will be off when the requested task is completed.
5. After finishing the erase procedure, please re-plug and restart system to get the latest drive status.

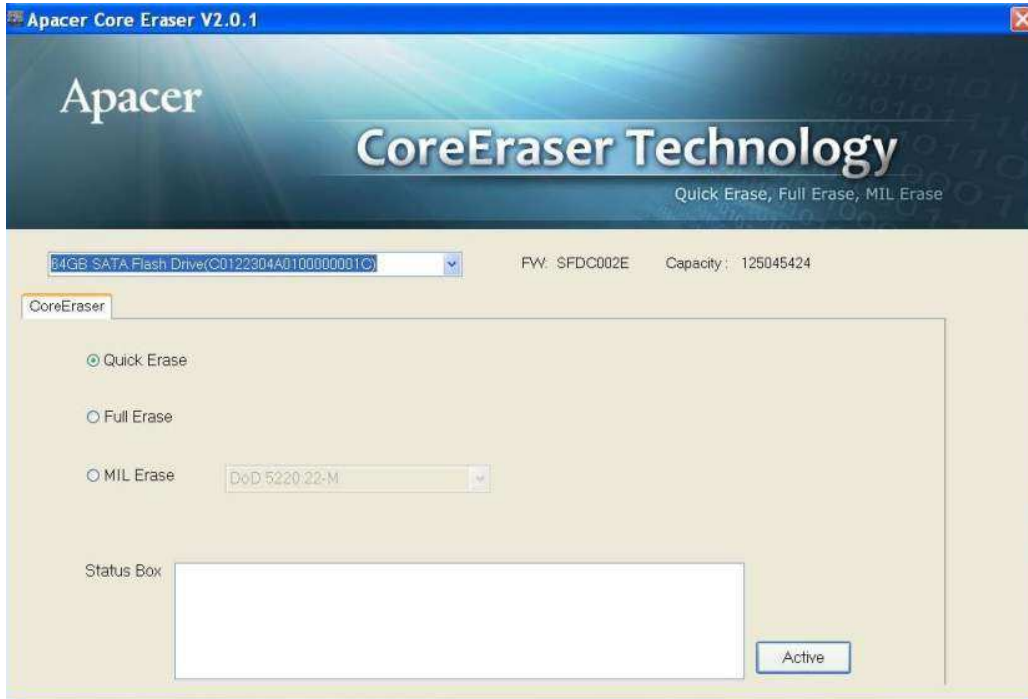
Core Eraser Technology

Quick Erase features

1. Double-click on the icon of Core Eraser V2.0.1 to launch the tool. The tool should be able to detect your connected device.



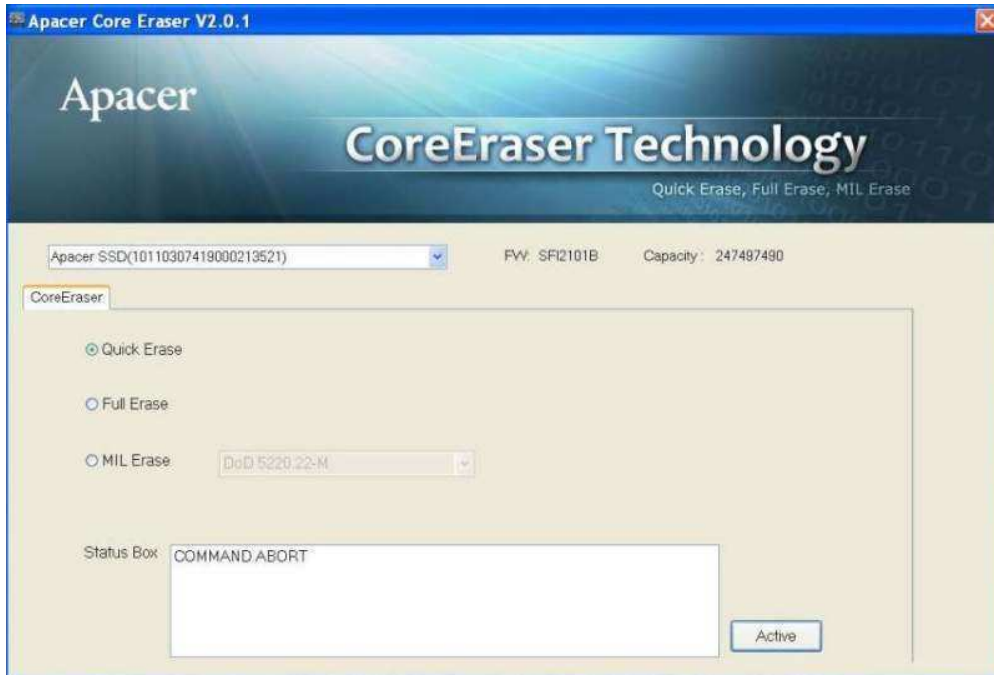
2. Select Quick Erase function then click the “Active” button.



3. Then the Status Box will display messages regarding the status. If the command goes through, the box will show “COMMAND SUCCESS” message and some notes about the command operation.



4. If the command fails to go through, the box will show "COMMAND ABORT".



Full Erase features

1. Select Full Erase function then click the "Active" button.



2. The Status Box will return a message regarding the command status. If the command goes through, the box will show “COMMAND SUCCESS” message and some notes about the command operation.



3. If the command fails to go through, the box will display “COMMAND ABORT” message.



MIL Erase features

1. Select MIL Erase function and choose one of the options.



2. Then the Status Box will return a message regarding the command status. If the command goes through, the box will show "COMMAND SUCCESS" message and some notes about the command operation.

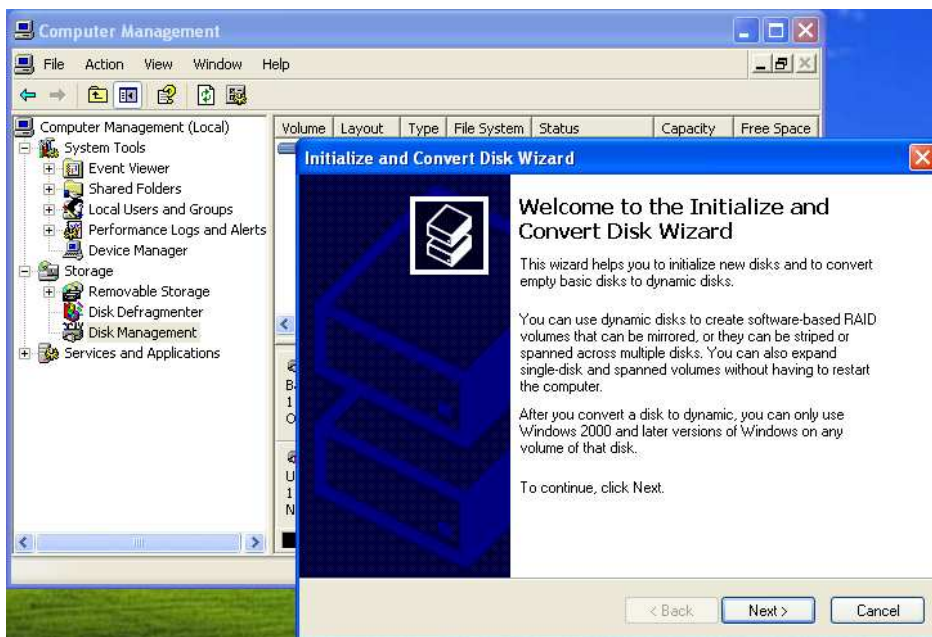


3. If the command fails to go through, the box will display "COMMAND ABORT" message.

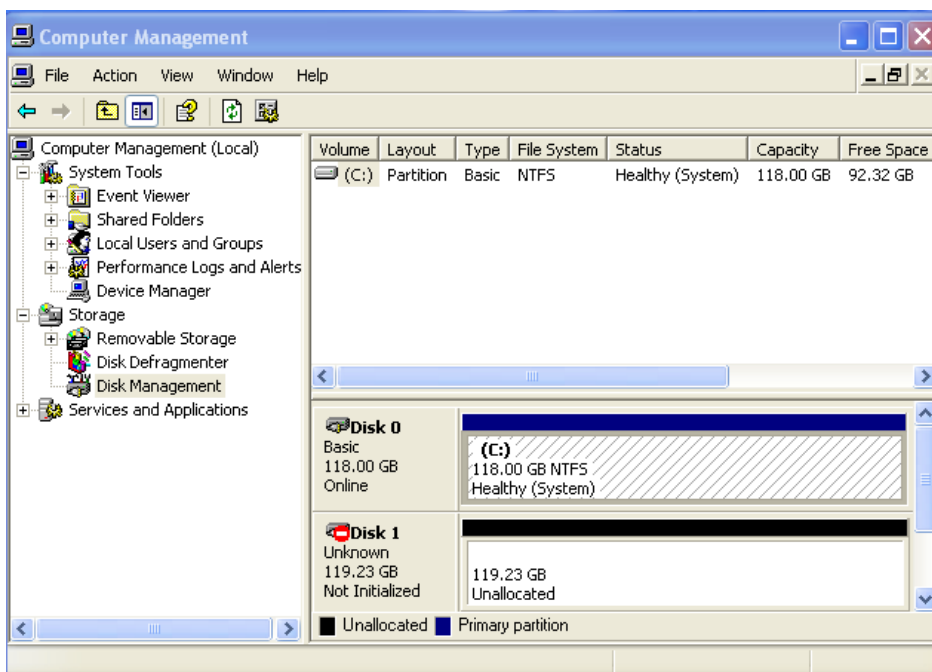


Checking the result

1. Right click on “My Computer” icon and select “management”. A pop up window, “Initialize and Convert Disk Wizard”, will appear, which means the erased drive requires a disk initialization. Click “Next” to start or Click “Cancel” to see drive status on “Computer Management” screen.



2. Once you click “Cancel” on the disk initialization wizard, simply click on “Disk Management” and you will see that the disk needs to be initialized and formatted before use.



Revision History

Revision	Date	Description	Remark
1.0	06/27/2012	Preliminary release	
1.1	08/16/2012	Version Update	
1.2	08/22/2012	Add command abort, LED instruction.	

Apacer Technology Inc.

4th Fl., 75 Hsin Tai Wu Rd., Sec.1
Hsichih, Taipei County 221, Taiwan
Tel: +886-2-2698-2888 Fax: +886-2-2698-2889
www.apacer.com

Copyright © 2012 Apacer Technology Inc. All Rights Reserved.
Information in this document is subject to change without prior notice.
Apacer and the Apacer logo are trademarks or registered trademarks of Apacer Technology Inc.
Other brands, names, trademarks or registered trademarks may be claimed as the property of
their respective owners.