

Write Protect & Mode Converter User Manual

August 10, 2015



Apacer Technology Inc.

1F, No.32, Zhongcheng Rd., Tucheng Dist., New Taipei City, Taiwan, R.O.C

Tel: +886-2-2267-8000 Fax: +886-2-2267-2261

www.apacer.com

Table of Contents

WRITE PROTECT	3
MODE CONVERTER.....	5

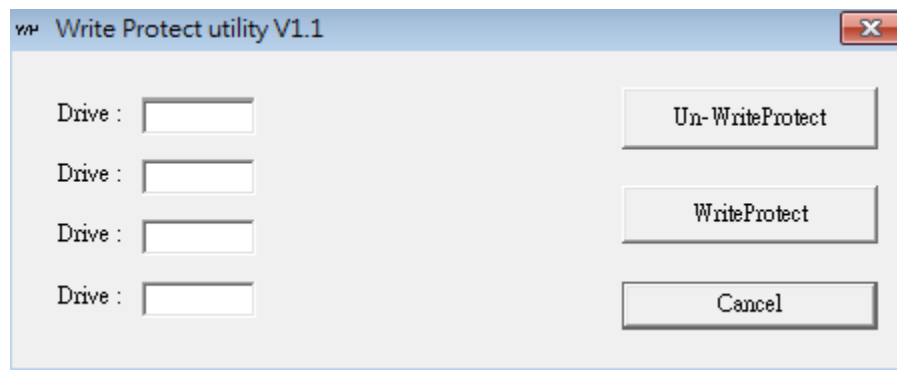
Write Protect

Purpose

The utility provides a superior write protect method (dummy write) to prevent the flash drive from being changed by any intention.

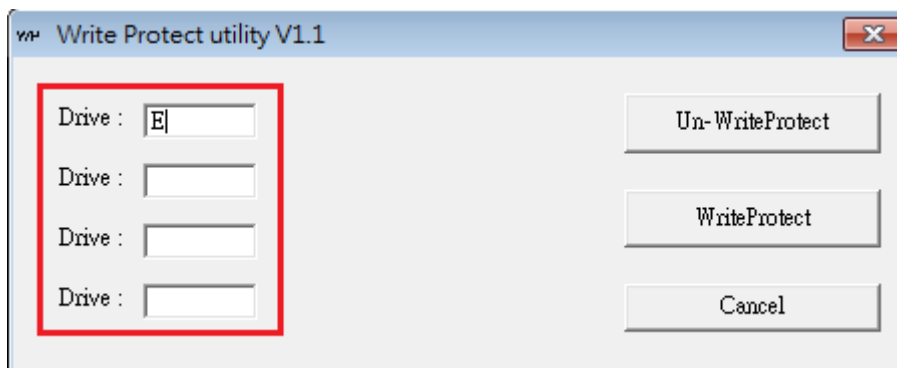
How to use

Step1. Run “WriteProtect”



Step2. The Write Protect utility dialog box appears, then fill out the drive letter(s) to the “Drive” Cell(s).

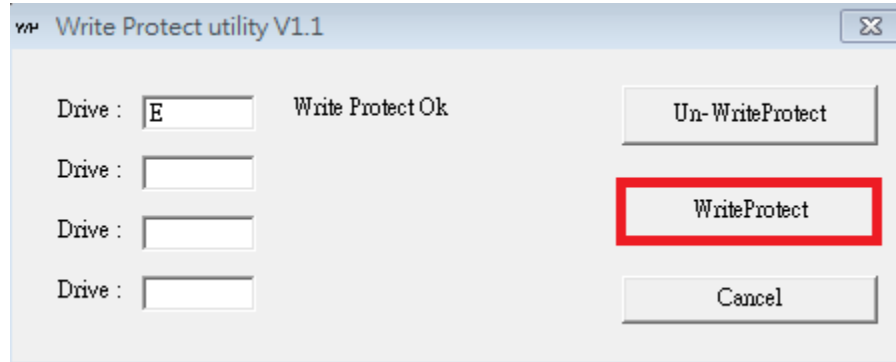
Note: The utility does support up to 4 drives at a time



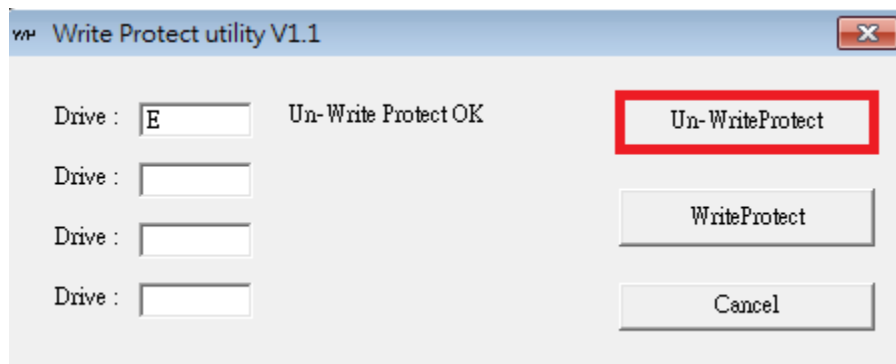
Write Protect & Mode Converter

User Manual

Step3. Click “WriteProtect” button, then the indicated drive(s) will show the message “Write Protect OK”



Step4. If want to unlock the function, fill out the destined drive letter(s) and click “Un-Write protect”.



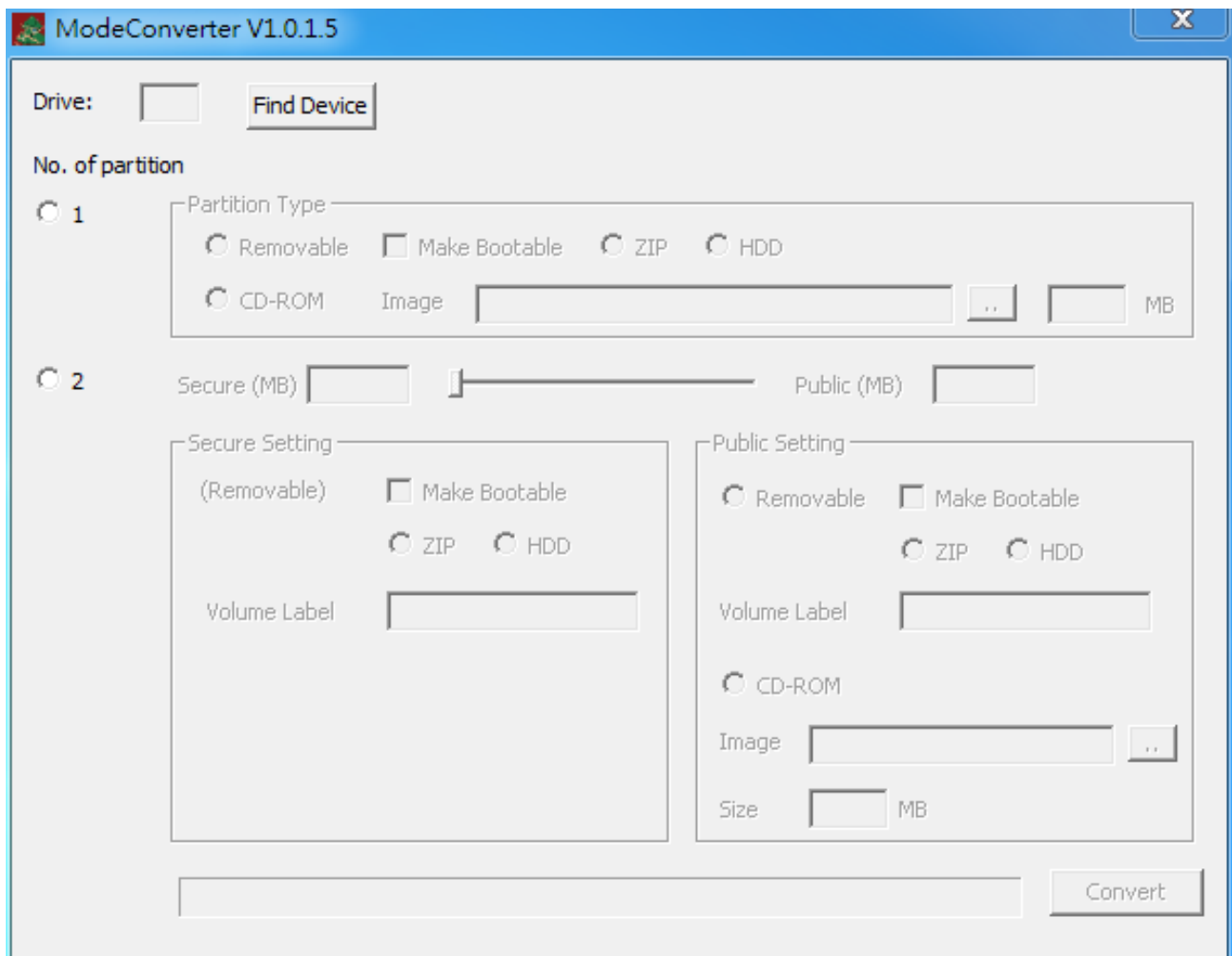
Mode Converter

Purpose

The utility allows users to create another partition inside a flash drive and convert one of the partitions as a CD-ROM drive.

How to use: Create another partition

Step1: Run “ModeConverter”



Write Protect & Mode Converter

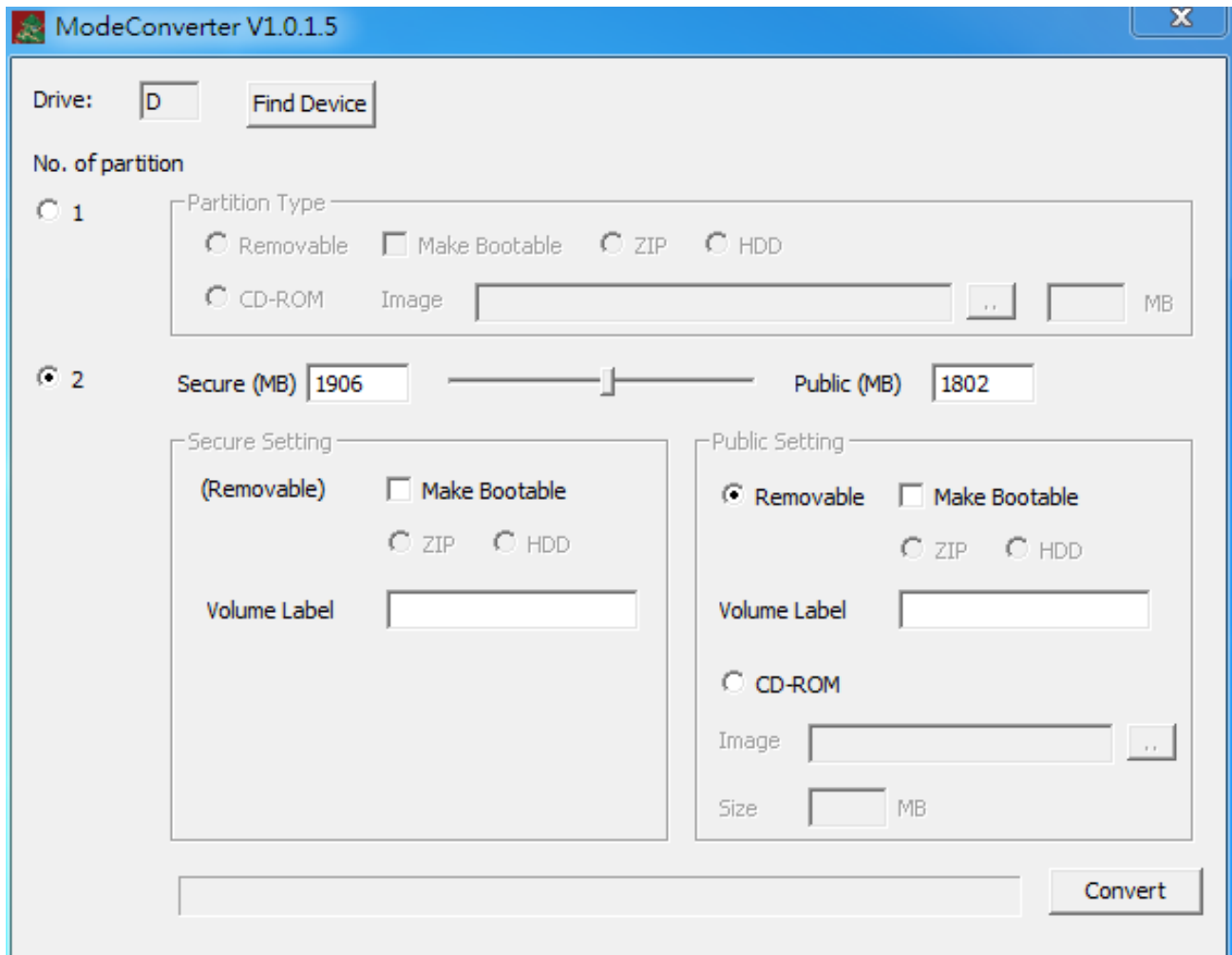
User Manual

Step2: Insert a flash drive to a host, then click **“Find Device”**. The drive letter will appear on the **“Drive”** cell section, it means the drive has been detected properly.

Step3: Select **“2”** in the **“No. of Partition”**, and you will be able to change the sizes on **“Secure”** and **“Publish”** partitions by using the shifting bar.

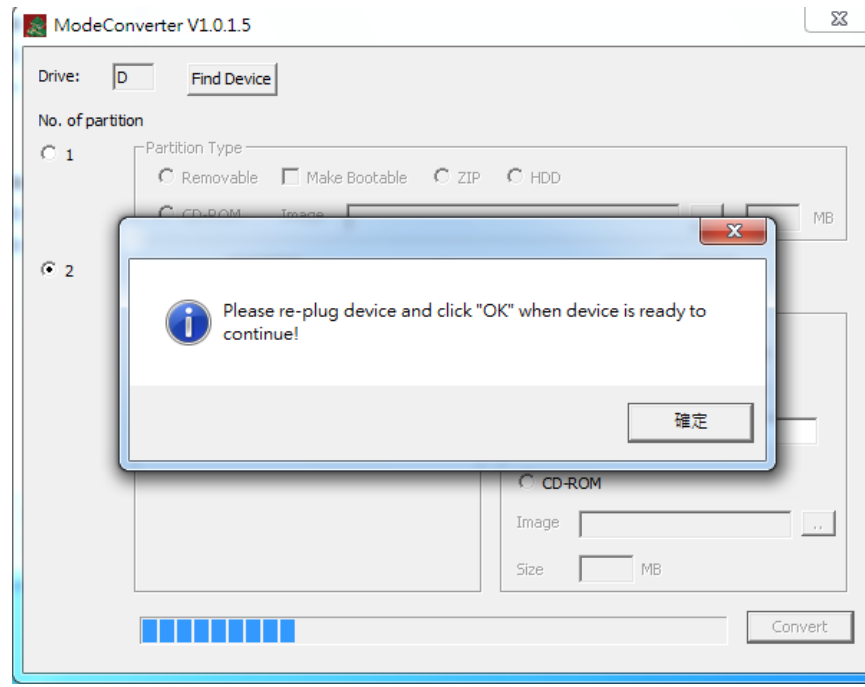
Step4: Choose **“Removable”** option on **“Public Setting”**, then hit **“Convert”**.

Note: If want to label the volume, you can fill it out in **“Volume Label”** box.

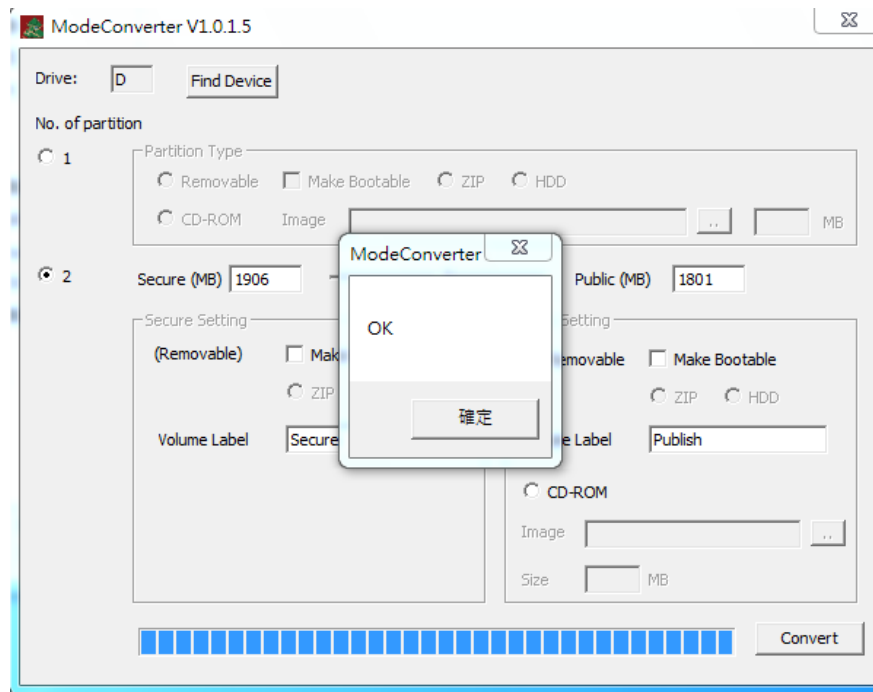


Write Protect & Mode Converter User Manual

Step5: After the process has began few seconds, the dialog box pop out. Re-plug the device and hit “OK” to keep continuing the process.



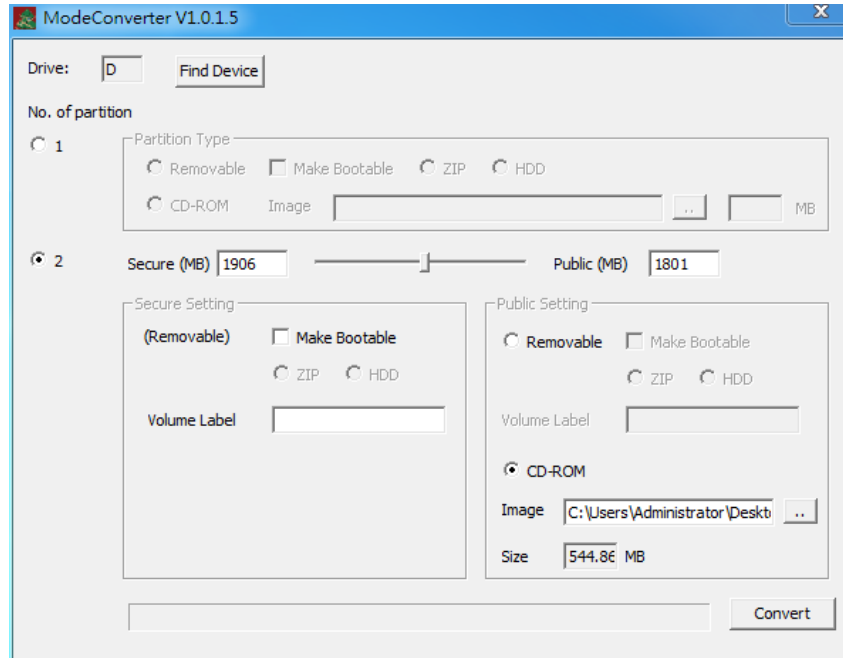
Step6: The “OK” message appears when the process has finished. Click “OK”.



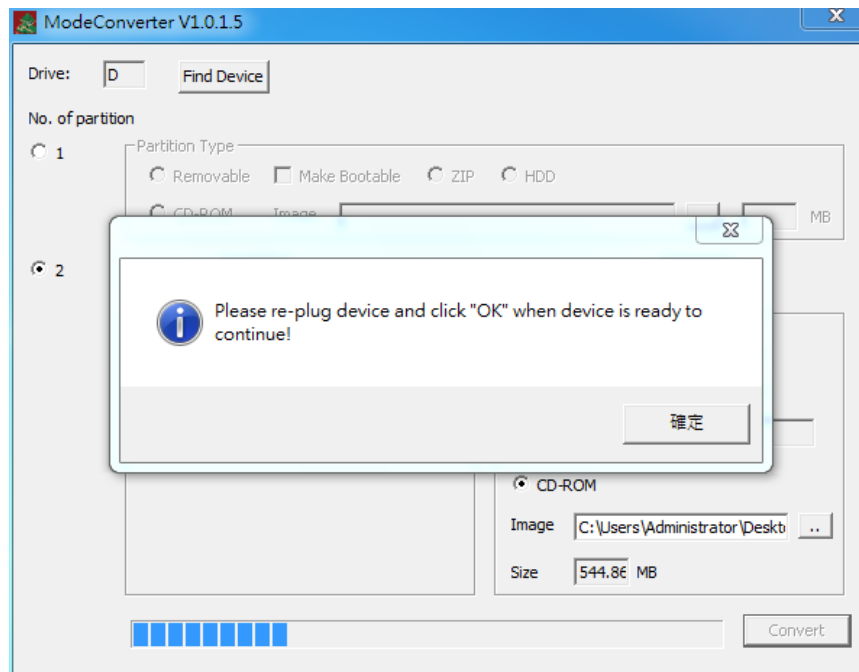
How to use: Create a CD-ROM

Please follow the step 1 to 3 in “How to use: Create another partition”

Step4: Choose “CD-ROM” option on “Public Setting”, then hit “Browse” icon and select an iso image. Click “Convert”

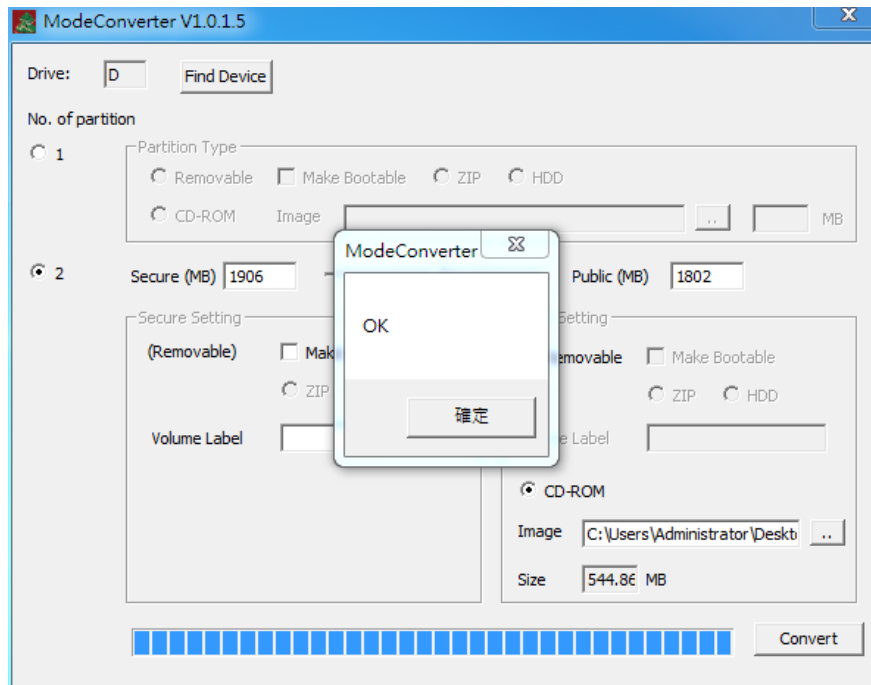


Step5: After the process has began few seconds, the dialog box pop out. Re-plug the device and hit “OK” to keep continuing the process. (It may take a while)



Write Protect & Mode Converter User Manual

Step5: The “OK” message appears when the process has finished. Click “OK”.



You now will see the “**Publish**” partition has become a CD-ROM in the host “**Computer**”

