



Reliability & Communication Testing Instruments

KING DESIGN INDUSTRIAL CO., LTD.

RELIABILITY TEST LABORATORY

5F,NO. 3, Lane 270, Pei Shen Road Sec. 3,

http://www.kdi.tw

Shen Keng Dist., New Taipei City, 222, Taiwan, R.O.C

http://www.vibration.com.tw

TEL: 886-2-2662-5100 FAX: 886-2-2662-3094

E-mail:service@kdi.tw

TESTING / INSPECTION REPORT

REPORT NO : TT-120927-1

COMPANY : Apacer Technology Inc.

ADDRESS : 3F, No.83, Kur Wong Rd., Aspire Park, Lung Tan Hsiang,
Tao Yuan Hsien, Taiwan,

TEL : 886-2-2698-2888

FAX : 886-2-2698-2889

SPECIMEN : Serial ATA Flash Drive

DATE OF RECEIVED : 2012/09/24

DATE OF TESTED : 2012/09/25

TEST / INSPECTION ITEMS : Temperature Test

REMARKS :

- The laboratory is accredited by ISO/IEC 17025 General Requirements for the Competence of Calibration and Testing Laboratory.
- The results only apply to the device under test.
- This report is 6 pages, and no part of it may be abstracted or reproduced.

Test Engineer : <i>Yi-Hai Lai</i>	
Approval Signatory : <i>2012.10.2 David Lee</i>	Laboratory Head : <i>Chang Hsin-Tai</i>



TESTING / INSPECTION REPORT

TESTING EQUIPMENT :

Chamber : KING SON THS-D4C-150, S/N:2682

TEST ENVIRONMENT :

Temperature : 23.8°C (25±10°C)

Relative Humidity : 57% RH (50±25% RH)

SPECIMEN :

Model : SAFD25P-M

Quantity : 1 piece

TESTING / INSPECTION REPORT

TEST SPECIFICATION :

Reference to IEC60068-2-1 Test Ab

Temperature Test

Step	Temperature (°C)	Duration
1	-40	5 hrs

Temperature Rate : 1 min/°C

Total Test Time : 5 hrs

Test Step :

1. ***In BIOS setting: Set "Always On" for "Restore on AC Power Loss".***
2. ***Starting OS -- WinXP, SP3.***
3. ***When the OS has been fully loaded, then Power off system.***
4. ***Down temperature from 25 (°C) to -40 (°C)***
5. ***Keep the temperature at -40 (°C) for 4 (hrs)***
6. ***Power on the system, when the OS has been fully loaded (2 minutes), then power off.***
7. ***Wait for 10minutes, then power on the system again.***
8. ***Repeat step6 & step7 for 4 cycles. (Total 5 cycles)***
9. ***The total test time is 5(hrs) for -40(°C).***

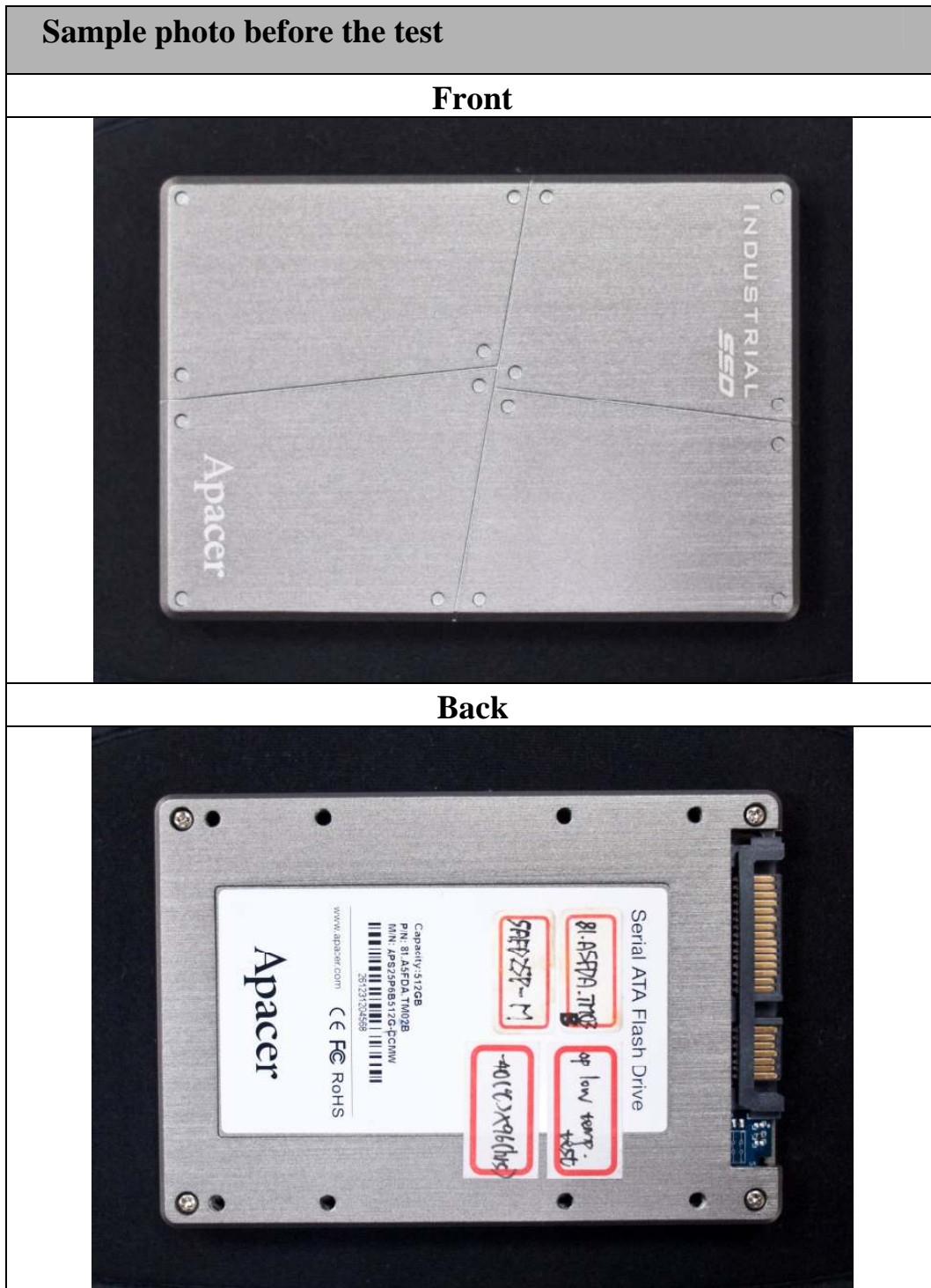
TEST RESULT :

Describe	PASS	FAIL	Non-Judgment
Function judgment ⁽¹⁾	√	---	---
Appearance check ⁽²⁾	√	---	---

(1)—Booting function was normal after the test.

(2)—No visible damages were found after the test.

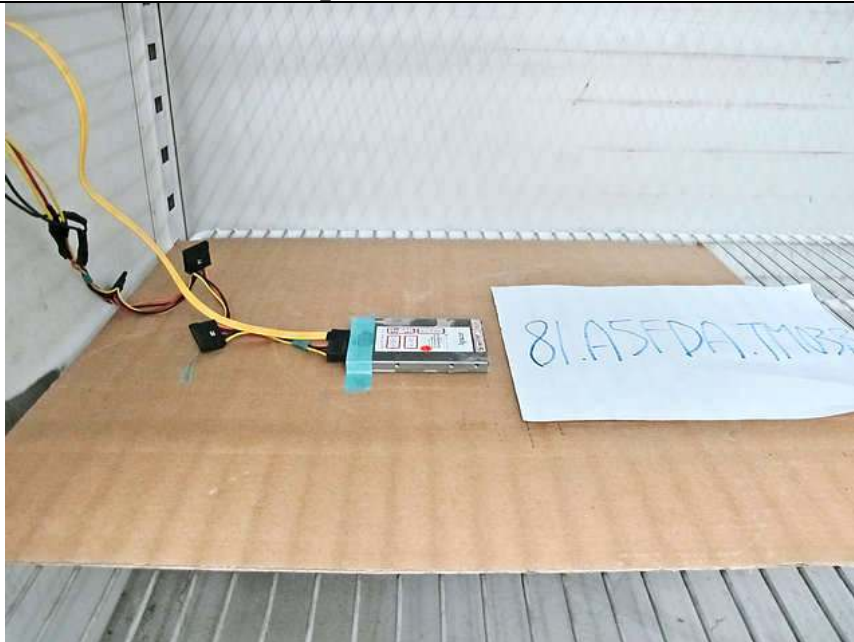
TESTING / INSPECTION REPORT



TESTING / INSPECTION REPORT

Testing photos

Sample in the chamber



Testing Computer

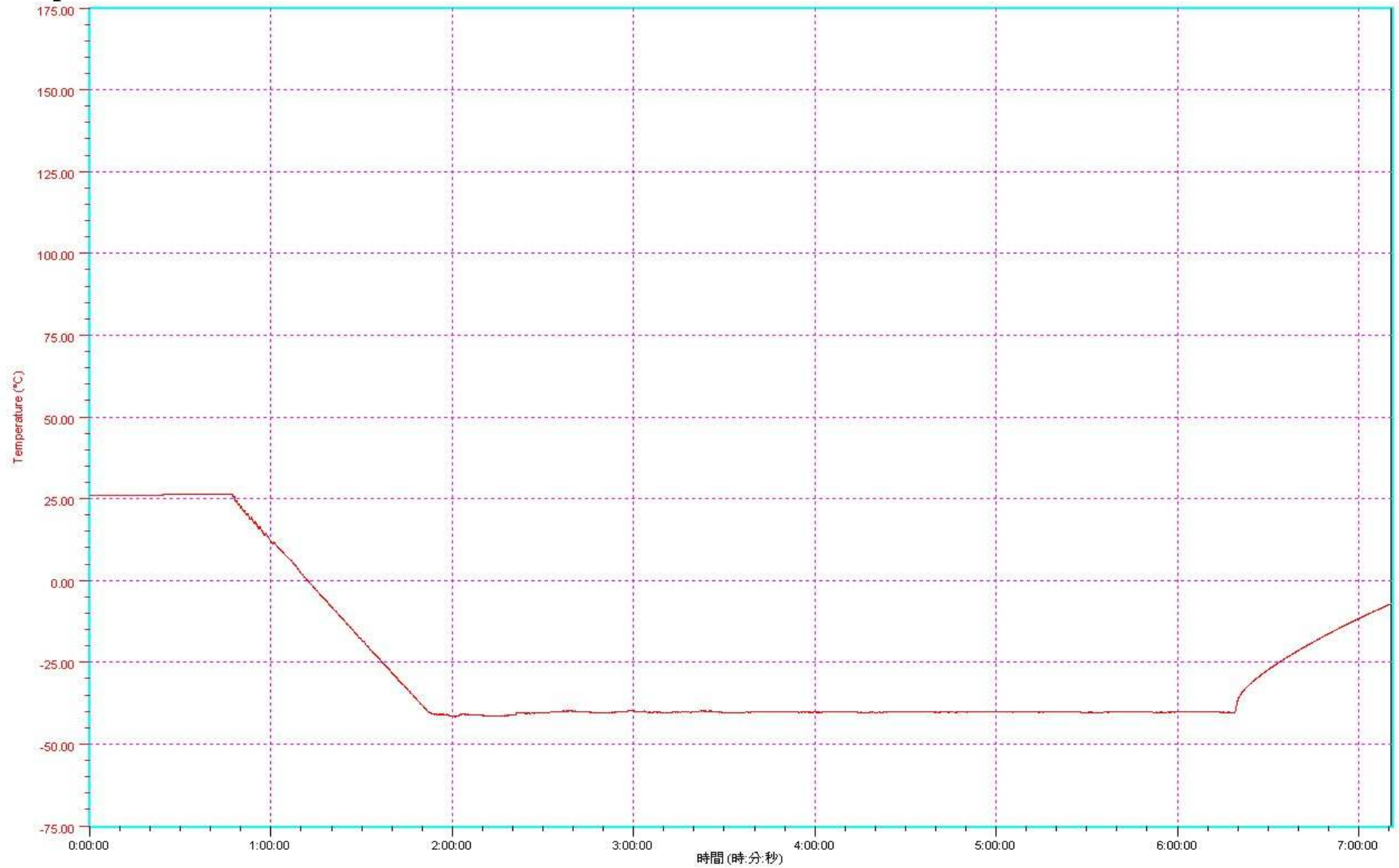
CPU : Intel(R) CPU 2160@1.80GHz

Mother Board : Gigabyte PH67A-D3-B3

DRAM : Apacer 512MB UNB PC2-5300 CL5

OS : Windows XP, SP3, Traditional Chinese

Temperature Profile



-END-